



CORonavirus Vulnerabilities and INFORMATION
dynamics Research and Modelling

Socio-Economic Impacts of COVID-19

Bi-Monthly Report: 10

Authors

Dalila Antunes, Sara Miccoli & Elena Ambrosetti

To cite this report: Antunes, D. Miccoli, S. & Ambrosetti, E. (2022).
Socio-Economic Impacts of COVID-19. Bi-monthly report 10, July 2022.
COVINFORM H2020 Project No. 101016247.

Disclaimer

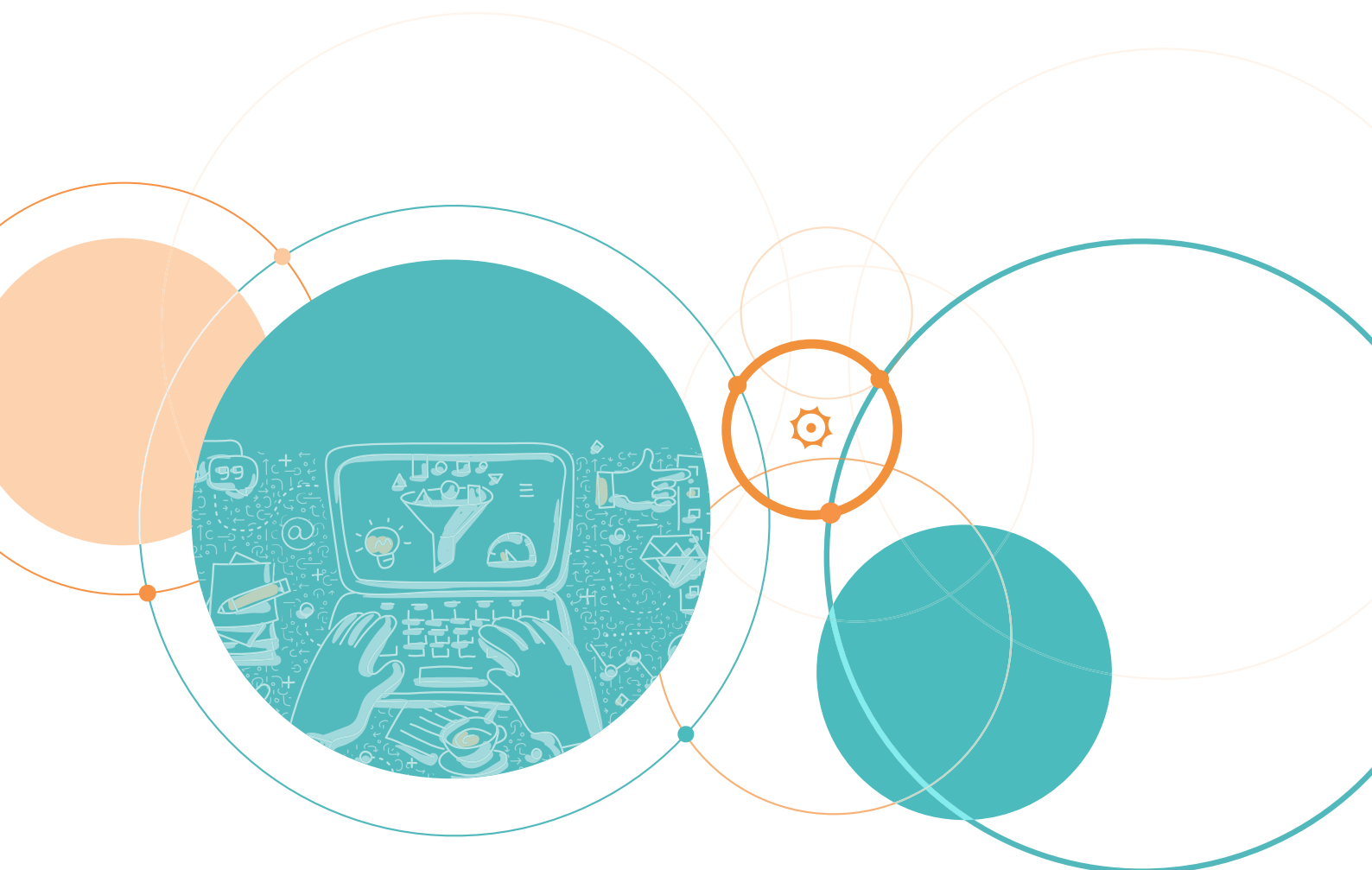
Disclaimer: The content of this publication is the sole responsibility of the authors, and in no way represents the view of the European Commission or its services.



This project has received funding from the European Union's Horizon 2020 Research and Innovation Programme under Grant Agreement No 101016247.

Table of Contents

COVINFORM indicators & primary data collection.....	5
COVID-19 and society: the impact on different systems.....	6
Good practices.....	8



The COVINFORM project aims to investigate the socio-economic impact COVID has had different domains of populations and societies, namely governments, public health, specific communities, and communication.

Desk research has been conducted for each area to identify issues, problems and indicators useful for analysis. Specific case studies and empirical research are being carried out to study specific consequences on certain categories of populations pertaining to the four domains.

COVINFORM INDICATORS & PRIMARY DATA COLLECTION

Examples of vulnerable groups identified

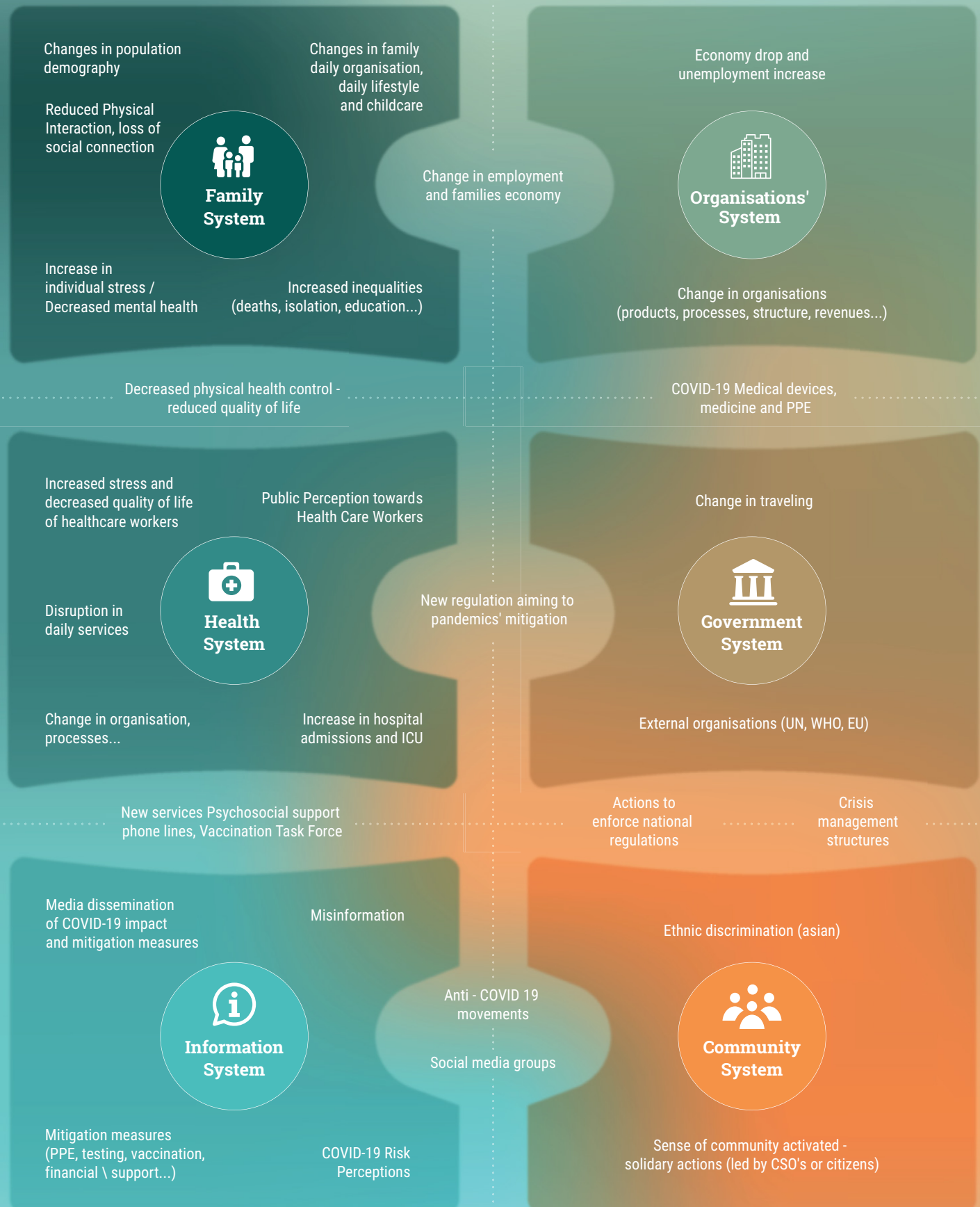
- Healthcare Workers
- Migrant Workers
- Asylum Seekers
- Single/lone parents
- Clinically Vulnerable
- Women Victim of Domestic Violence
- Homeless and Drug Dependent
- Gypsy & Traveller Community



The COVID-19 pandemic has had a variety of consequences on the various systems that constitute today's societies. Government systems have faced the development of measures to counter the virus. Health systems have experienced increased hospitalizations with major consequences on daily services. Family, community, and organization systems faced social, economic consequences of movement restrictions, in addition to those of the virus itself. The information system has been challenged by misinformation.

Some specific consequences of the pandemic have affected more than one sector of society simultaneously.

COVID-19 AND SOCIETY: THE IMPACT ON DIFFERENT SYSTEMS



GOOD PRACTICES



The pandemic, in addition to the numerous challenges, has also enabled the development of good practices.

Organization



- Ability to detect an upcoming crisis
- Well-functioning formal and informal networks: the importance of national-local communication
- Ability of organizing crisis responses and a clear chain of command
- Collaboration between different units

Technology



- Important public investments to improve network infrastructures, support distance learning and teleworking, improve forms of communication with citizens. Strong development of software and apps

Solidarity



- Towards native and immigrant populations in conditions of poverty and marginality or people with a drug addiction, sex workers, and homeless people
- Organisation and regulation of food banks, psychological support, information activities

Culture and respect for diversity



- Different solutions for different communities
- Cooperation with local leaders with high credibility (churches and mosques)
- Involving VIP also to combat the many fake-news on the social media and texting mobile apps
- Increase internet usage in those communities less familiar with technology

Cooperation



- Towards native and immigrant populations in conditions of poverty and marginality or people with a drug addiction, sex workers, and homeless people
- Organisation and regulation of food banks, psychological support, information activities

Door to door



- 'mobile clinics' travelling around the city
- 'vaccine vans' driven to particular sites where particular groups congregate

The COVINFORM project

Acronym	COVINFORM
Title	Coronavirus Vulnerabilities and INformation dynamics Research and Modelling
Coordinator	SYNYO GmbH
Reference	101016247
Type	Research and Innovation Action (RIA)
Programme	HORIZON 2020
Topic	SC1-PHE-CORONAVIRUS-2020-2C Behavioural, social and economic impacts of the outbreak response
Start	01 November 2020
Duration	36 months

Contact

Consortium	SYNYO GmbH (SYNYO) , Austria Magen David Adom in Israel (MDA) , Israel Samur Proteccion Civil (SAMUR) , Spain Universita Cattolica del Sacro Cuore (UCSC) , Italy SINUS Markt- und Sozialforschung GmbH (SINUS) , Germany Trilateral Research LTD (TRI UK) , UK Trilateral Research LTD (TRI IE) , Ireland Kentro Meleton Asfaleias – Center for Security Studies (KEMEA) , Greece Factor Social Consultoria em Psicossociologia e Ambiente LDA (FS) , Portugal Austrian Red Cross (AUTRC) , Austria Media Diversity Institute (MDI) , UK Societatea Națională de Cruce Rosie Din România – Romanian Red Cross (SNCRR) , Romania University of Antwerp (UANTWERPEN) , Belgium Sapienza University of Rome (SAPIENZA) , Italy University Rey Juan Carlos (URJC) , Spain Swansea University (SU) , UK Gotenborg University (UGOT) , Sweden
-------------------	---

