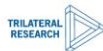


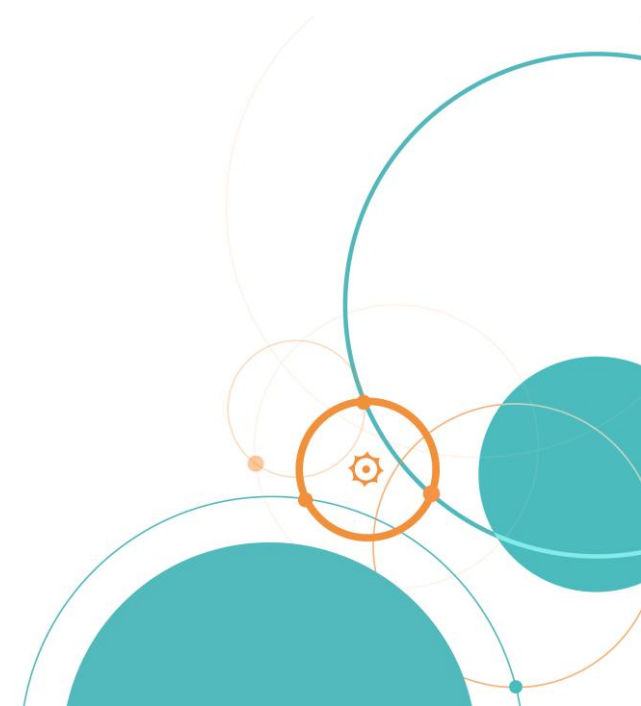
# COVINFORM

## COronavirus Vulnerabilities and INFormation dynamics Research and Modelling

### Project introduction



This project has received funding from the European Union's Horizon research & innovation programme under Grant Agreement No. 101016247.

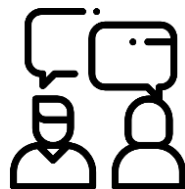


# COVINFORM at a glance



**35 months**

11/2021 – 10/2024



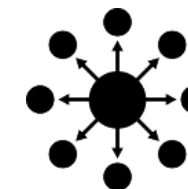
**16 partners**

practitioners – research – SMEs



**15 countries**

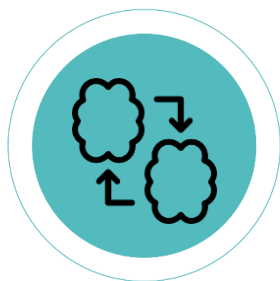
under research



**10 case studies**

for in-depth research

## OUTCOMES



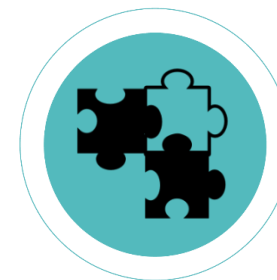
**Lessons learned & knowledge transfer**



**Bi-monthly reports & guidelines**



**Knowledge Repository & interactive dashboards**



**Modelling of dimensions of vulnerability**

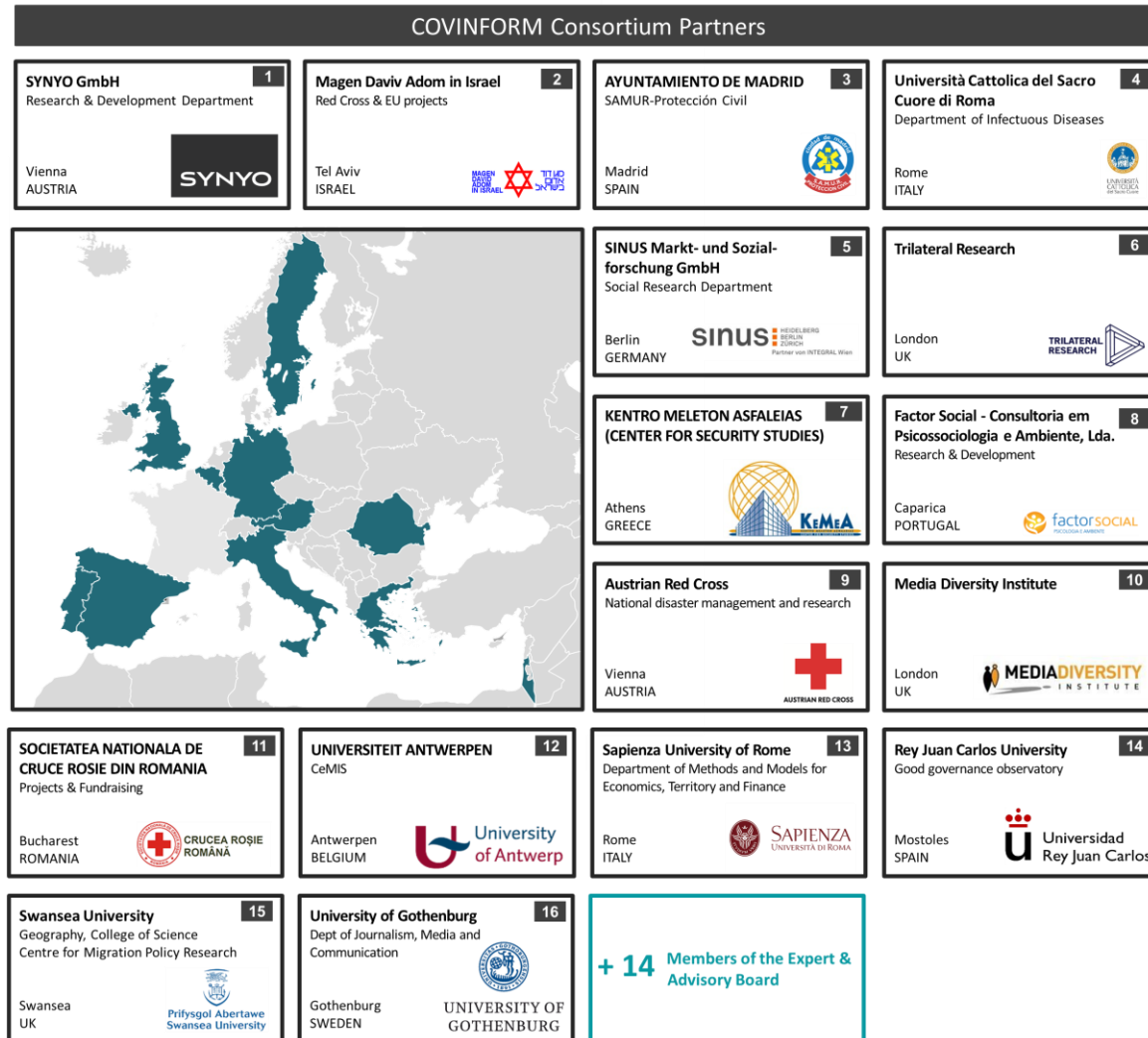
COVINFORM analyses promising practices and their consequences in target communities through **case studies** focusing on the impact on **vulnerable populations** such as frontline healthcare workers, older people, homeless persons, ethnic minorities, etc.

Drawing **upon intersectionality theory** and **complex systems analysis**, the project conducts an interdisciplinary critique of COVID-19 responses and their (unintended) socio-economic impact on the levels of government, public health, community, and information and **inclusive communication and misinformation**.

The COVINFORM project will:

- assess **COVID-19 responses** in a multilevel governance framework in a cross-country comparison;
- **index and model** relevant dimensions of health, socioeconomic, political, and community vulnerability and resilience to
- develop an **online portal, guidelines and toolkits** for stakeholders in the governmental, public health, and civil society/community domains.

# Project consortium



## 16 partners from 11 countries

- 5 universities
- 7 practitioners and research organisations
- 4 industry and SMEs from medical and security sectors
- multi-disciplinary approach: combining expertise in
  - sociology,
  - public health,
  - emergency medicine,
  - psychology,
  - migration studies,
  - anthropology,
  - epidemiology,
  - virology,
  - gender studies,
  - economics,
  - risk communication,
  - communication science & journalism,
  - crisis management,
  - ethical and social impact assessments,
  - political science, and
  - human geography.

01

**ANALYSE** preparedness, initial responses, and subsequent responses to COVID-19 across the EU27 countries and the UK and selected third countries.

02

**INDEX** and model relevant dimensions of health, socioeconomic, political, and community vulnerability and resilience within a multidisciplinary and intersectional theoretical framework.

03

**COMPARE** selected regional/local responses within 15 EU27+UK countries, with a focus on local social structures and multi-level governance processes at the local level and whether they diverge from national response plans.

04

**ASSESS** the impacts of national and regional/local COVID-19 responses on human behaviour, social dynamics, and physical and mental health outcomes within both general populations and specific vulnerable groups.

05

**IMPLEMENT** pilot case studies in selected EU and non-EU countries, with a focus on transferring promising practices for boosting well-being within specific vulnerable groups.

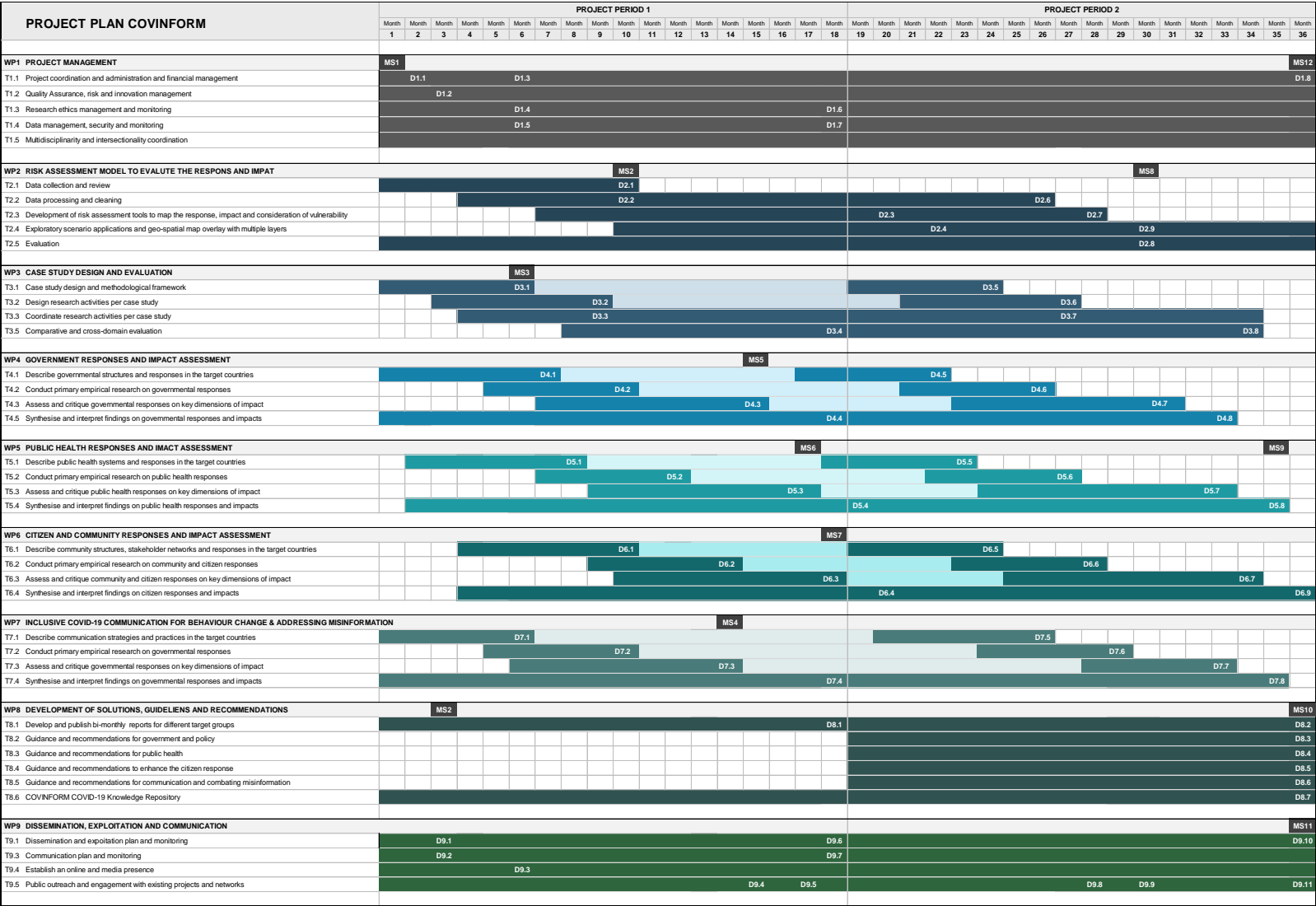
06

**DEVELOP** policy guidelines and promising practices to influence adherence to behavioural advice across different groups in society and improve the resilience, wellbeing and mental health of the population.

07

**INTEGRATE** the project parameters, data flows, research findings, case study assessments, and response guidance into the COVINFORM COVID-19 Knowledge Repository.

# Work plan



Project management

Data modelling & risk analysis

Case study design & analysis

Governmental response

Public health response

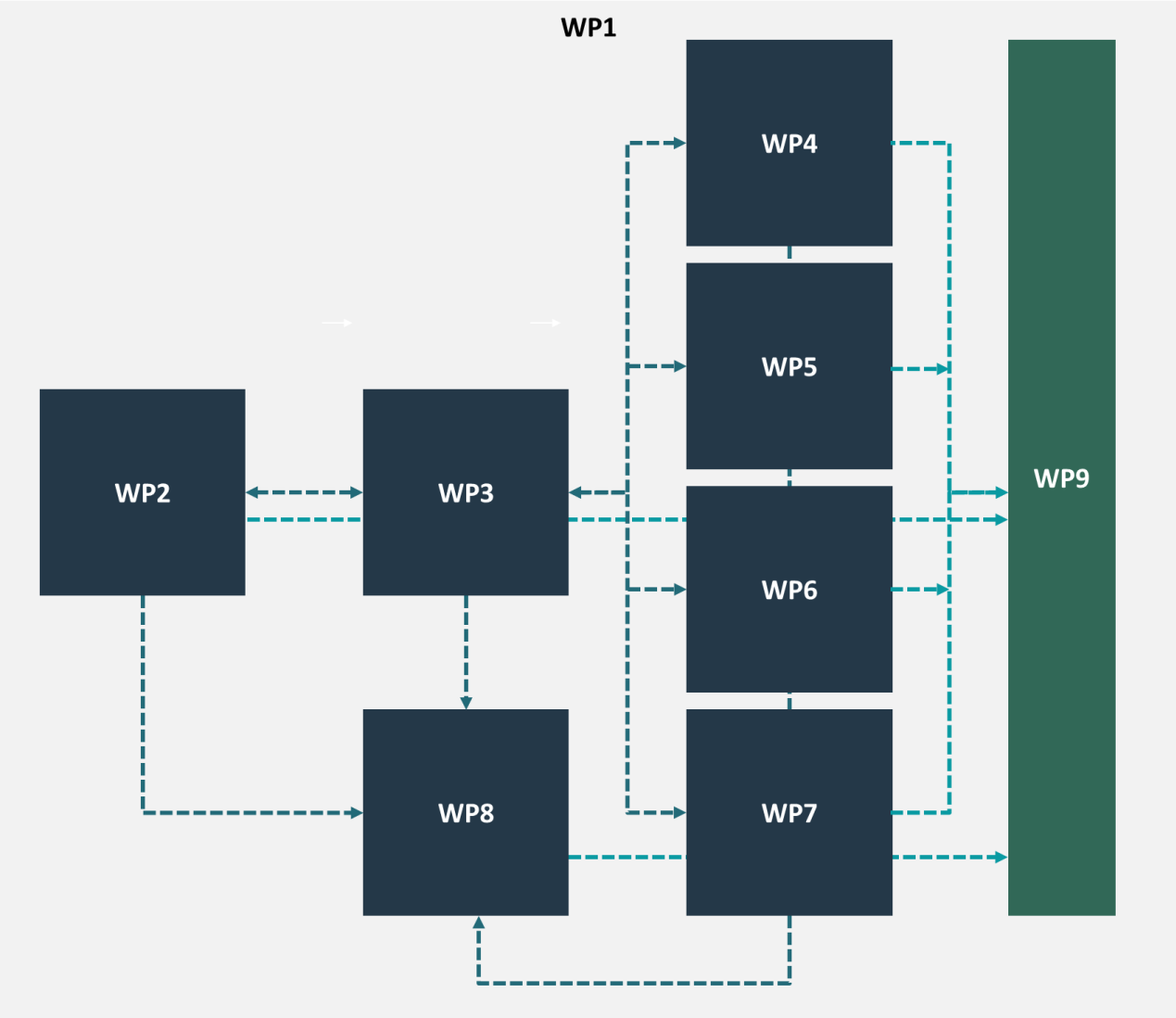
Community & citizen response

(Inclusive) communication & misinformation

Solutions, guidelines & bi-monthly reports

Communication, Dissemination & Exploitation

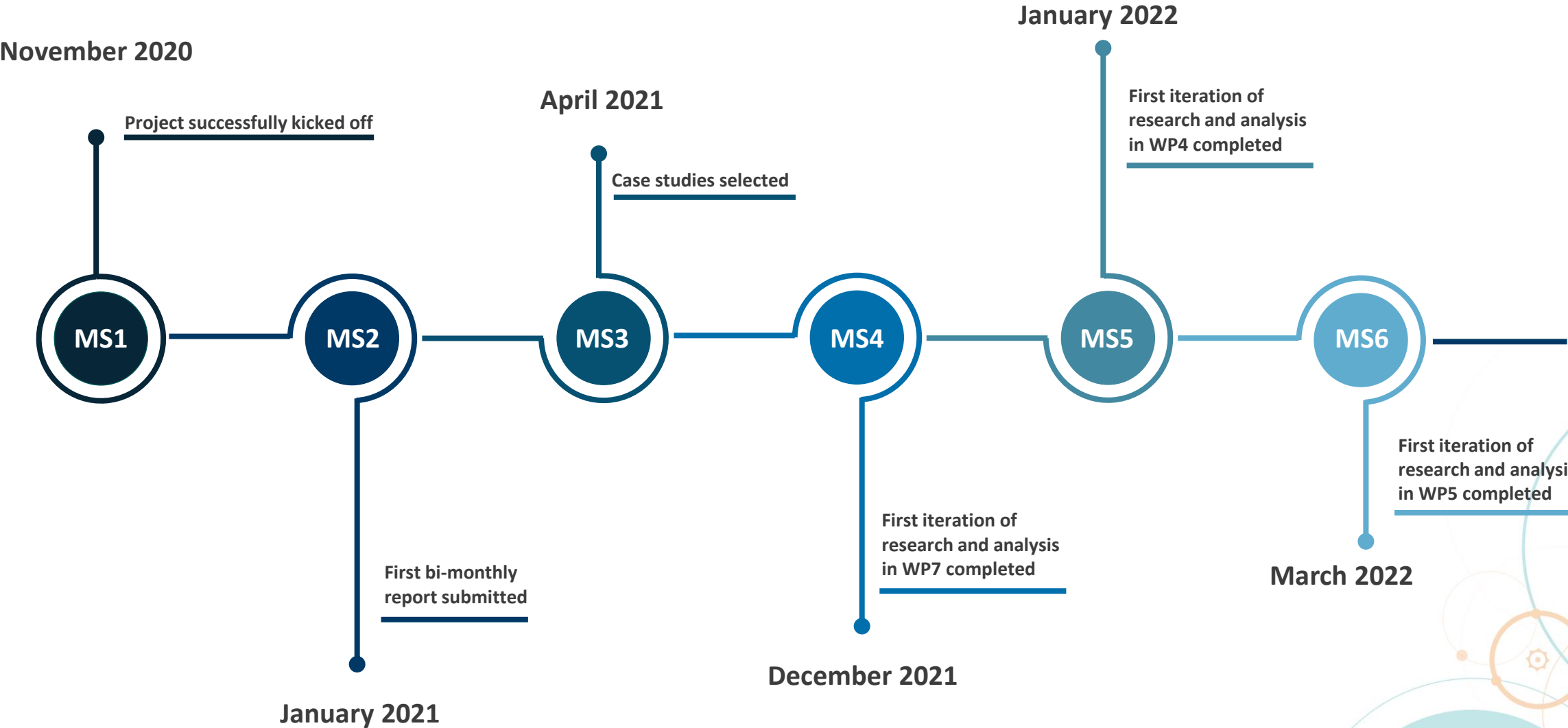
# Work package interdependencies



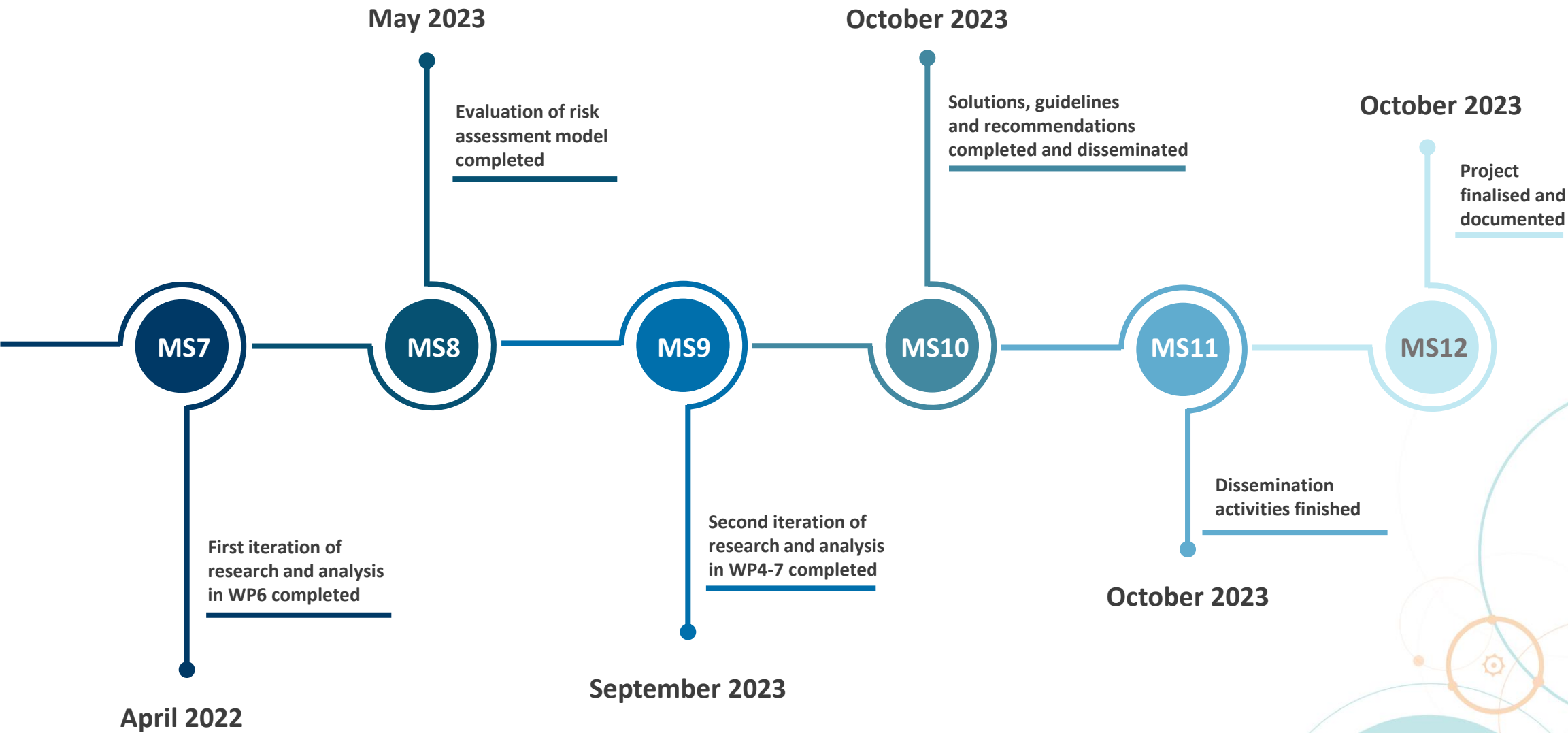


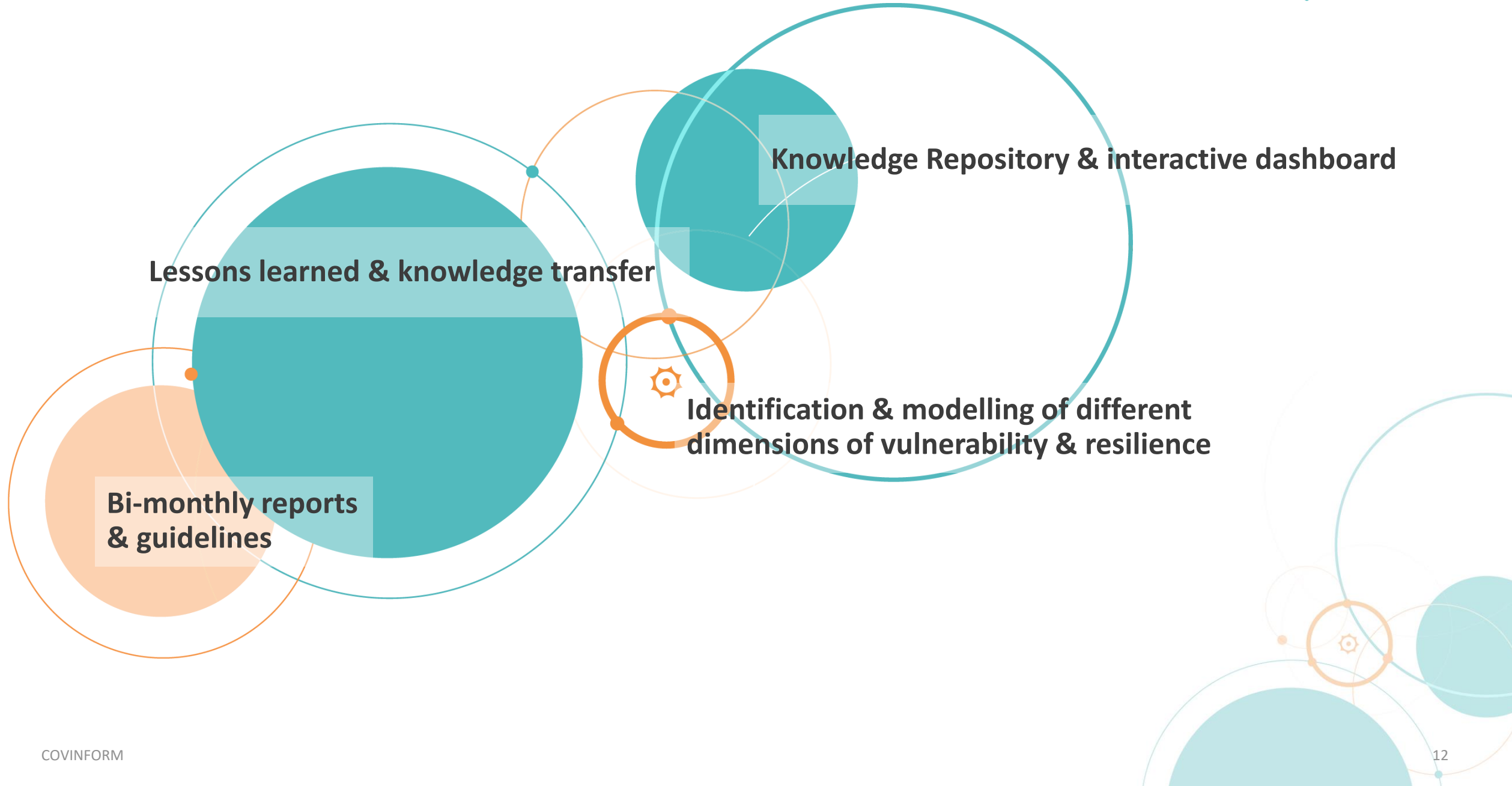
- **HARD AND SOFT SYSTEMS SCIENCE:** quantification and predictive model-building & cultivation of interaction, communication, and policy-making among the complex web of actors involved
- **MIXED-METHODS CASE STUDIES AND TRIANGULATION OF INTERSECTING VULNERABILITIES:** utilization of quantitative, qualitative, and hybrid methods
- **INNOVATIVE AND CREATIVE THEORIES AND METHODS:** synthesis of perspectives in quantitative social science and humanistic and qualitative social science (theory level), utilization of innovative and creative methods (research level)
- **RISK ASSESSMENT MODEL AND REPOSITORY DEVELOPMENT:** building of risk assessment models, with both qualitative and quantitative data

# Milestones



# Milestones





I1

**Improve the resilience, wellbeing and mental health** of the population, frontline workers and vulnerable groups and mitigate health inequalities during and after pandemics;

I2

**Contribute to a better understanding of the impact, effectiveness, the public health preparedness and responses** (control) that have been taken at different governance levels in the context of the ongoing pandemic;

I3

**Prepare holistic assessments of the social, economic and political impacts** of the outbreak and its responses, and to propose and deploy evidence-based policy measures and other initiatives to improve industry's and society's adaptation capacity and resilience;

I4

**Contribute to a holistic public health preparedness and response** in the context of ongoing and future epidemics;

15

**Provide health authorities with guidance for further public health interventions,** and support implementation of actions to mitigate or manage consequences of current policies, and to better tailor future pandemic management strategies.

16

**Inclusive guidance, recommendations and policy:** examine the impact of COVID-19 responses on vulnerable and marginalised groups, provide guidance and recommendations for more inclusive policies that consider the particular needs of different groups.

17

**Emancipating members of so-called vulnerable groups:** In giving a voice to members of vulnerable groups and giving them the opportunity to define their own vulnerability, as well as appropriate measures to address it, COVINFORM will contribute to emancipation and visibility of these groups.

18

**COVID-19 Knowledge Repository:** bringing together civil protection and disaster management experts and organisations, and support the ability and capacity to deal with disaster; integrate expertise and resources on COVID-19 through the COVID-19 Knowledge Repository.



 [office@covinform.eu](mailto:office@covinform.eu)



<http://covinform.eu/>

in

 [covidform-project](#)



 @covidinform.eu



 @covinform